

Village of Salisbury

SCHEDULE B Zoning Map

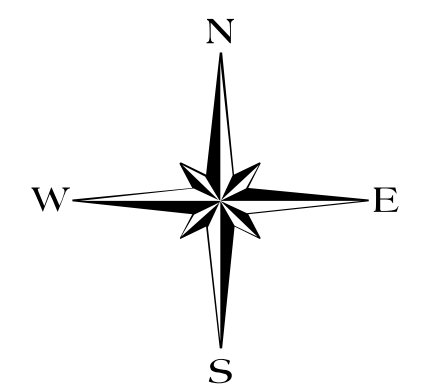
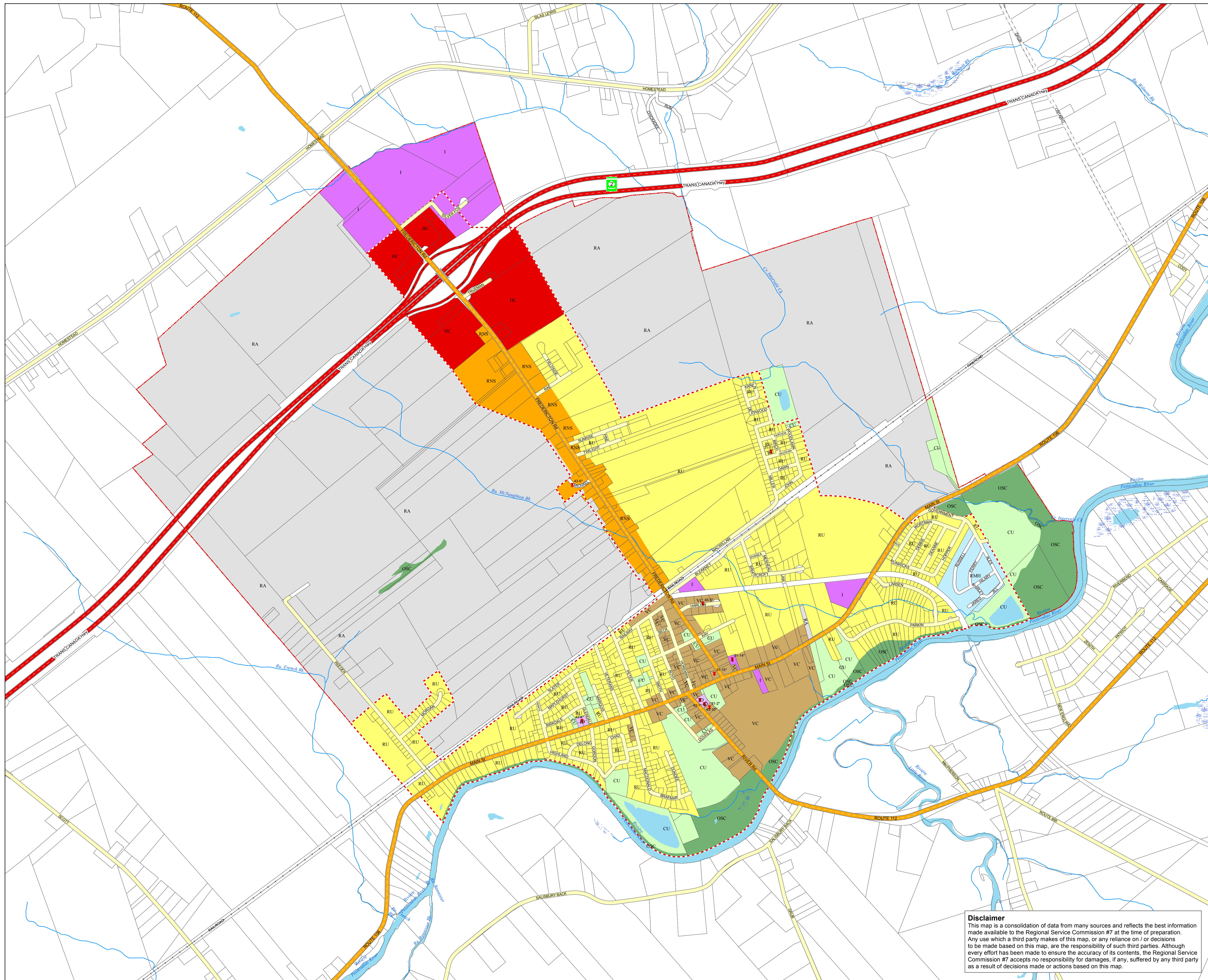
Dated March 2008; By-Law No. 43

Legend

- RU Residential Use
- RMH Residential Mini Home
- RNS Residential Neighbourhood Service
- HC Highway Commercial
- VC Village Centre
- I Industrial
- RA Rural Area
- OSC open Space Conservation
- CU Community Use
- ID Integrated Development
- Serviceable Boundary


Zone Amendments

- September 22, 2008; By-Law No. 43-1* (With Conditions)
- May 13, 2009; By-Law No. 43-4* (With Conditions)
- October 29, 2009; By-Law No. 43-5* (With Conditions)
- February 17, 2010; By-Law No. 43-8
- May 5, 2010; By-Law No. 43-6* (With Conditions)
- December 12, 2011; By-Law No. 43-10* (With Conditions)



Disclaimer
This map is a consolidation of data from many sources and reflects the best information made available to the Regional Service Commission #7 at the time of preparation. Any use which a third party makes of this map, or any reliance on / or decisions to be made based on this map, are the responsibility of such third parties. Although every effort has been made to ensure the accuracy of its contents, the Regional Service Commission #7 accepts no responsibility for damages, if any, suffered by any third party as a result of decisions made or actions based on this map.

7
Regional Service Commission
Commission de services régionaux



0 100 200 400 600 800 1,000 1,200
Meters

1:10,000